

Awa', Whigs, Awa'

32 bar Reel

Music: Awa' Whigs Awa' & Maggie Lauder arranged by Peter White (see *Dances to Song Tunes* for the music).

Fig. 1

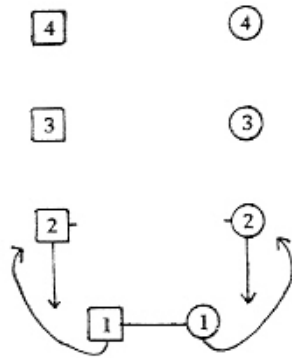
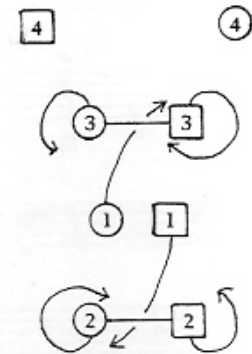


Fig. 2



1-2 1st couple set to each other, approaching.

3-4 Turn with both hands once round and open out to face upwards.

5-8 They cast off one place on own sides (see figure 1) and cross over, giving right hands (2nd couple move up on 5-6).

9-16 Reels of three at the sides : to begin, 1st woman passes 2nd man right shoulder and 1st man passes 3rd woman right shoulder. 1st couple end in 2nd place, "wrong" sides.

17-18 The three couples, taking hands at the sides, set to partners, approaching, and

19-20 Turn with both hands. 2nd couple turn half round and open out to face upwards, 3rd couple half round and open out to face downwards, 1st couple once round.

21-24 Half reels of three across the dance (see Figure 2): to begin, 1st woman passes 2nd man right shoulder and 1st man passes 3rd woman right shoulder. All end on own sides, 1st couple in 2nd place.

25-32 1st couple lead down, cast up round 3rd couple, lead up and cast off round 2nd couple.

Repeat, having passed a couple.

Devised by Hugh Foss.

Dances to Song Tunes. 1966.